

Antonie van Leeuwenhoeklaan 9
3721 MA Bilthoven
The Netherlands

Tel. : .. 31 (0 5.1.2e
E-mail : 5.1.2e @rivm.nl

Together with ErasmusMC, Rotterdam, being the National Influenza Centre (NIC) in the Netherlands
WHO COVID-19 reference laboratory

Want to know more about surveillance of influenza in the Netherlands? See (click or scan):



For COVID-19 see (click or scan):



From: 5.1.2i <5.1.2e @rivm.nl>
Sent: woensdag 16 september 2020 13:01
To: 5.1.2e, Dr.' <5.1.2e @synlab.com>; 5.1.2e <5.1.2e @synlab.com>
Cc: 5.1.2e <5.1.2e @synlab.com>; 5.1.2e <5.1.2e @synlab.com>; 5.1.2e <5.1.2e @synlab.com>;
<5.1.2e @synlab.com>; 5.1.2e <5.1.2e @synlab.be>; 5.1.2e <5.1.2e @synlab.com>

Subject: RE: Report (specificity and sensitivity) MVZ Synlab Leverkusen

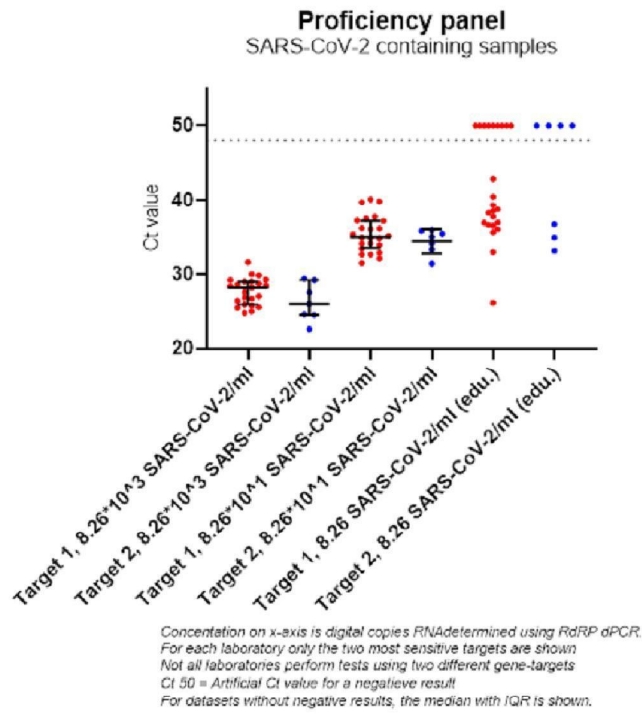
Dear 5.1.2e

Thank you for reporting your results in such a timely manner.

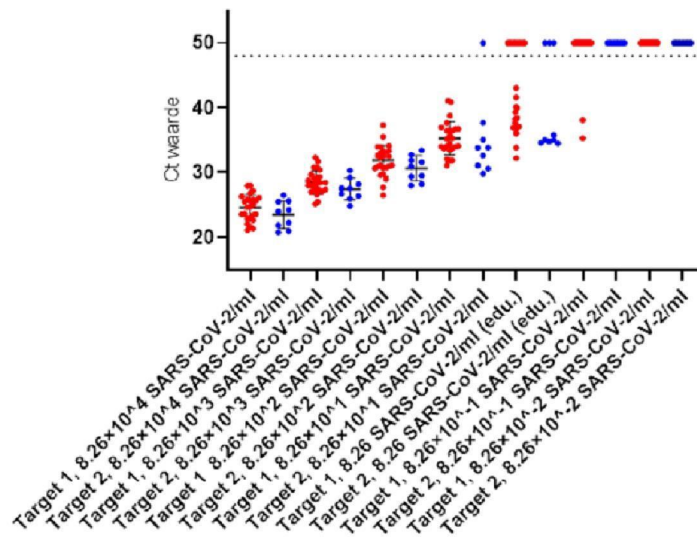
When testing the specificity panel, you were able to detect SARS-CoV-2 in all SARS-CoV-2-containing samples, including the educational sample (EQA_CoV20-04, containing 8.26 digital copies SARS-CoV-2 RNA, measured using RdRP-gene dPCR).

For the sensitivity panel you obtained a similar result as you were able to detect SARS-CoV-2 up to the educational sample (Sen. Serie-01, containing 8.26 digital copies SARS-CoV-2 RNA, measured using RdRP-gene dPCR) as well.

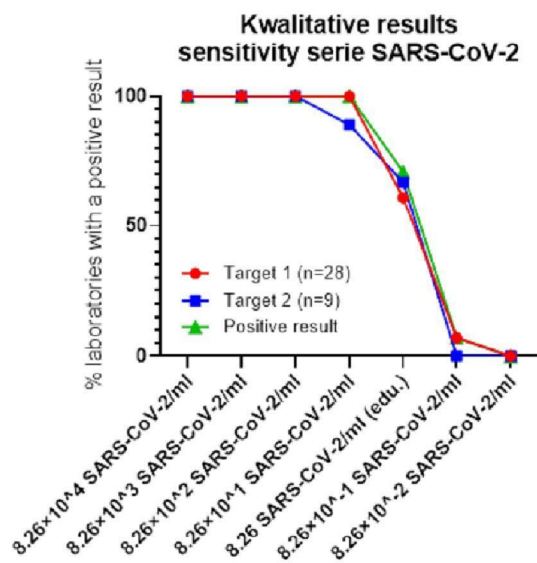
Below I have summarized the values found by laboratories testing both these panels in three figures.



Sensitivity serie SARS-CoV-2



Concentration on x-axis is digital copies RNA determined using RdRP dPCR.
 For each laboratory only the two most sensitive targets are shown
 Not all laboratories perform tests using two different gene-targets
 Ct 50 = Artificial Ct value for a negative result
 For datasets without negative results, the median with IQR is shown.



Concentration on x-axis is digital copies RNA determined using RdRP dPCR.
 For each laboratory only the two most sensitive targets are shown
 Not all laboratories perform tests using two different gene-targets
 A positive result is granted for a double positive (composite) signal, or for a positive signal from one of the gene targets.
 This figure shows the percentage positive results per SARS-CoV-2 concentration measured.

Attached to this email you will find the expected results for both panels.

Concerning your question about the confirmation samples: You are free to send the required samples (including documentation, also attached to the email) of suspected SARS-COV-2 patients to use whenever suits you best to the following address

Rijksinstituut voor Volksgezondheid en Milieu
 To the attention of John Sluimer/Adam Meijer
 + 0031 30 274 4485
 Antonie van Leeuwenhoeklaan 9
 3721 MA
 Bilthoven
 The Netherlands

With kind regards,

5.1.2e

5.1.2e



Rijksinstituut voor Volksgezondheid
 en Milieu
 Ministerie van Volksgezondheid,
 Welzijn en Sport

Division of Virology, Centre for Infectious Disease Control

Department of Emerging and Endemic Viruses (EEV) | Office 5.1.2e
National Institute for Public Health and the Environment (RIVM)
Antonie van Leeuwenhoeklaan 9 | 3721 MA, Bilthoven | The Netherlands
T: +31 (0)30 5.1.2e M: +31 (0) 5.1.2e

